



*Morris County, NJ*

# OFFICE OF THE PROSECUTOR

*Fredric M. Knapp*

Morris County Prosecutor

## *Current Heroin and Opiate Trends in Morris County*



Bradford C. Seabury  
Chief Assistant Prosecutor  
SPECIAL OPERATIONS DIVISION  
[bseabury@co.morris.nj.us](mailto:bseabury@co.morris.nj.us)

# Heroin and Opioid database – yearly Comparison

## 2014 (Jan – Dec)

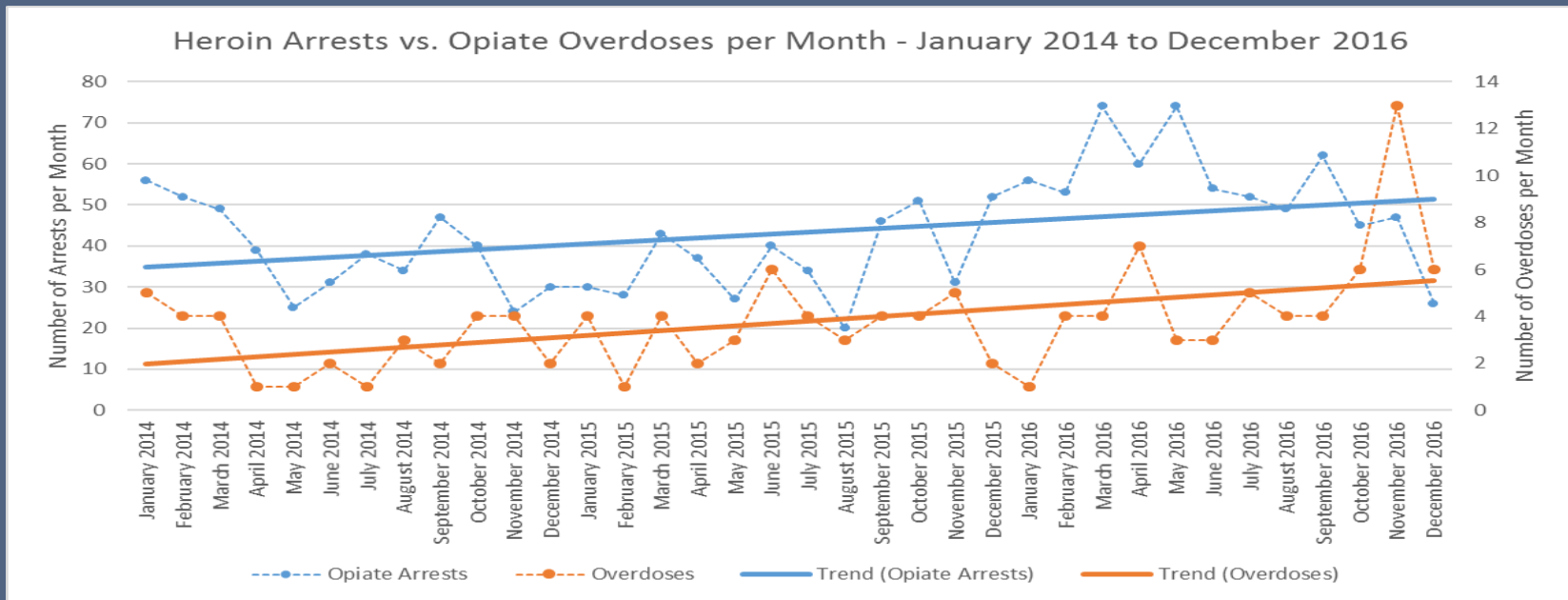
- Cases = 516 (29.2%)
  - Arrests=481 (93.2%)
  - Fatal=36 (6.8%)
- Male=373 (72.3%)
- Female=143 (27.7%)
- Age Range=18-79
- Max Arrests=5
- Morris Co.=61.5%

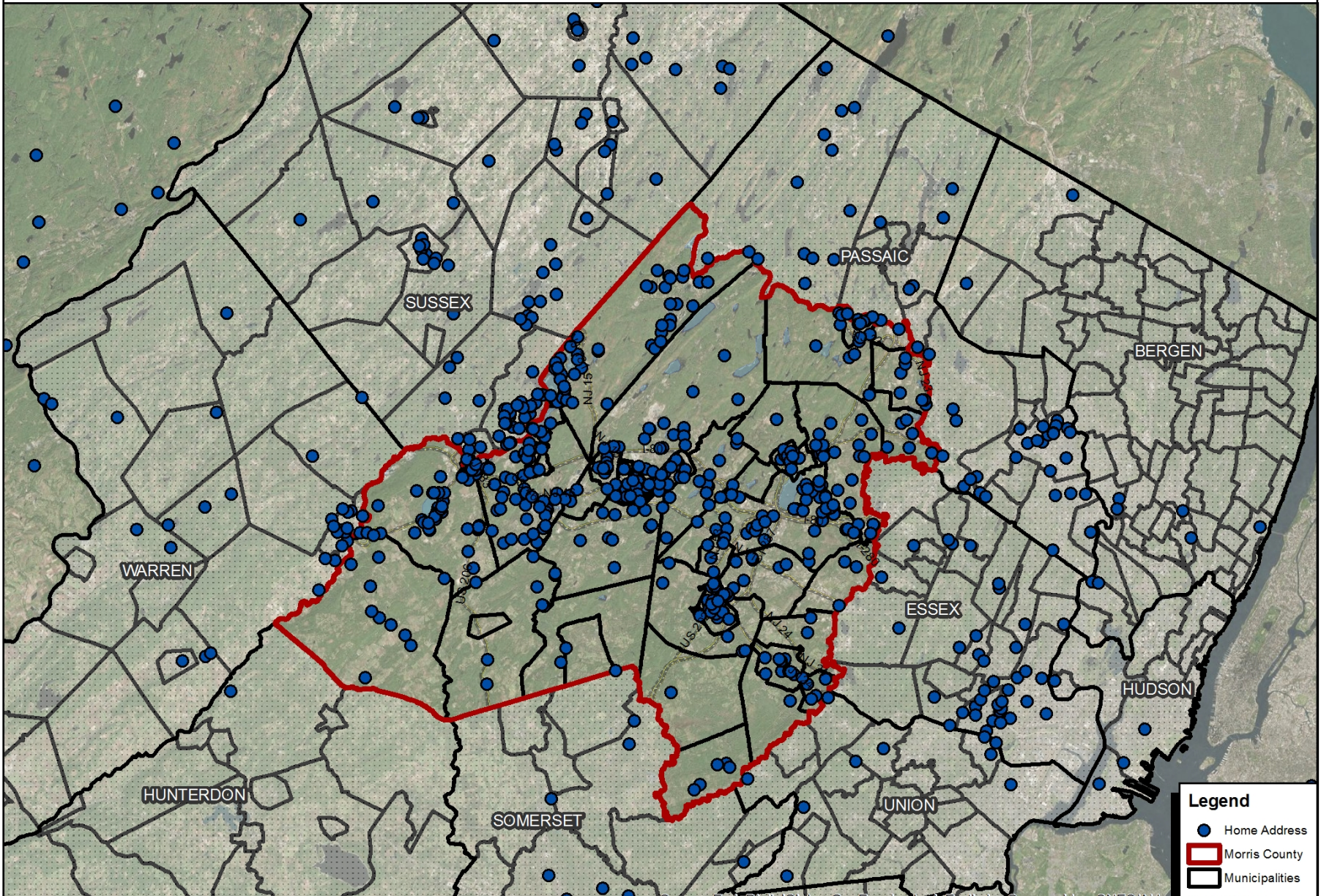
## 2015 (Jan – Dec)

- Cases=534 (30.2%)
  - Arrests=491 (91.9%)
  - Fatal=43 (8.1%)
- Male=394 (73.8%)
- Female=140 (26.2%)
- Age Range=18-73
- Max Arrests=4
- Morris Co.=61.2%

## 2016 (Jan – Dec)

- Cases=717 (40.6%)
  - Arrests=653 (91.1%)
  - Fatal=64 (8.9%)
- Male=528 (73.6%)
- Female=189 (26.4%)
- Age Range=17-66
- Max Arrests=4
- Morris Co.=56.2%





**Legend**

- Home Address
- ▭ Morris County
- ▭ Municipalities
- Highways

\*Data for Opiate Overdoses and Arrests was available from January 2014 to December 2016.

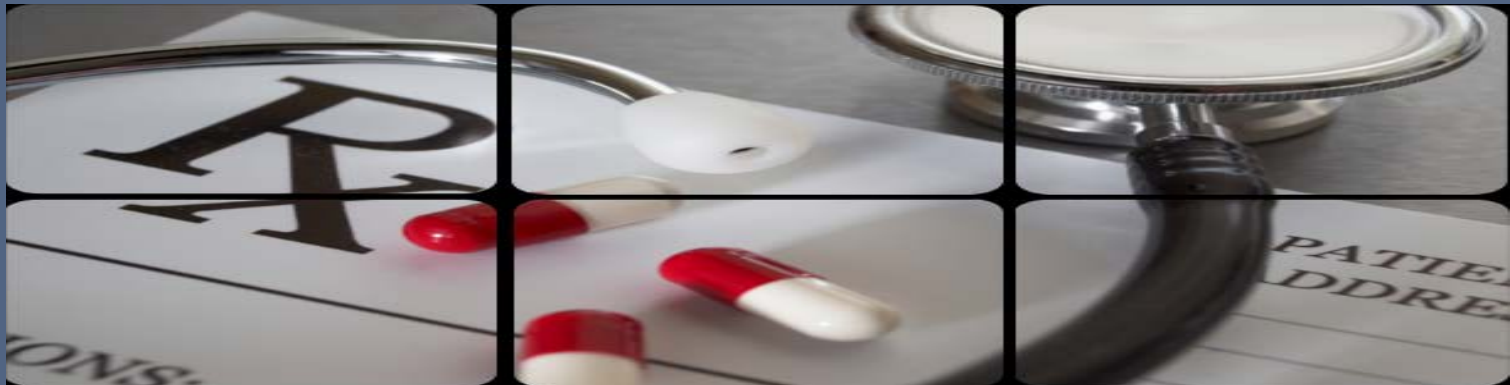
DigitalGlobe, GeoEye, iCubed, Earthstar Geographics, CNES/Airbus, Bing, Aerogrid, IGN, IGP, swisstopo, and the GIS User Community



# PRESCRIPTION OPIATES STREET *PHARMACEUTICALS*



- Still the most abused drug after alcohol
- Most commonly abused are Oxycodone and Vicodin
- Addictive is the same as that for heroin or methamphetamine
- Perceived as safe because they are prescribed by doctors
- **Prescribed opioids have become the fastest growing addiction problem in the US**



# OPIATES & PHARMACEUTICALS

- Sussex, Morris and Warren counties showed a 205% increase in prescription opioid pill submissions from 2014 to 2015
- Oxycodone continues to be the top diverted prescription pill in the state.



Almost **2 million** Americans abused or were dependent on prescription opioids in 2014.

According to CDC



From 1999 to 2013, the amount of prescription opioids dispensed in the U.S. nearly **quadrupled**.

According to CDC

*The United States makes up only 4.6 percent of the world's population, but consumes 80 percent of its opioids -- and 99 percent of the world's hydrocodone, the opiate that is in Vicodin.*

# HEROIN in Morris County

## Heroin Prices:

- *As Low as \$3 a fold*

Fold/Deck average is: \$6 - \$10

- *New Jersey Heroin is extremely pure and often mixed with other deadly poisons*

Also seeing Trend of:

- Heroin Capsules
- Heroin with oxy 30 marking (heroin disguised as a Pill)

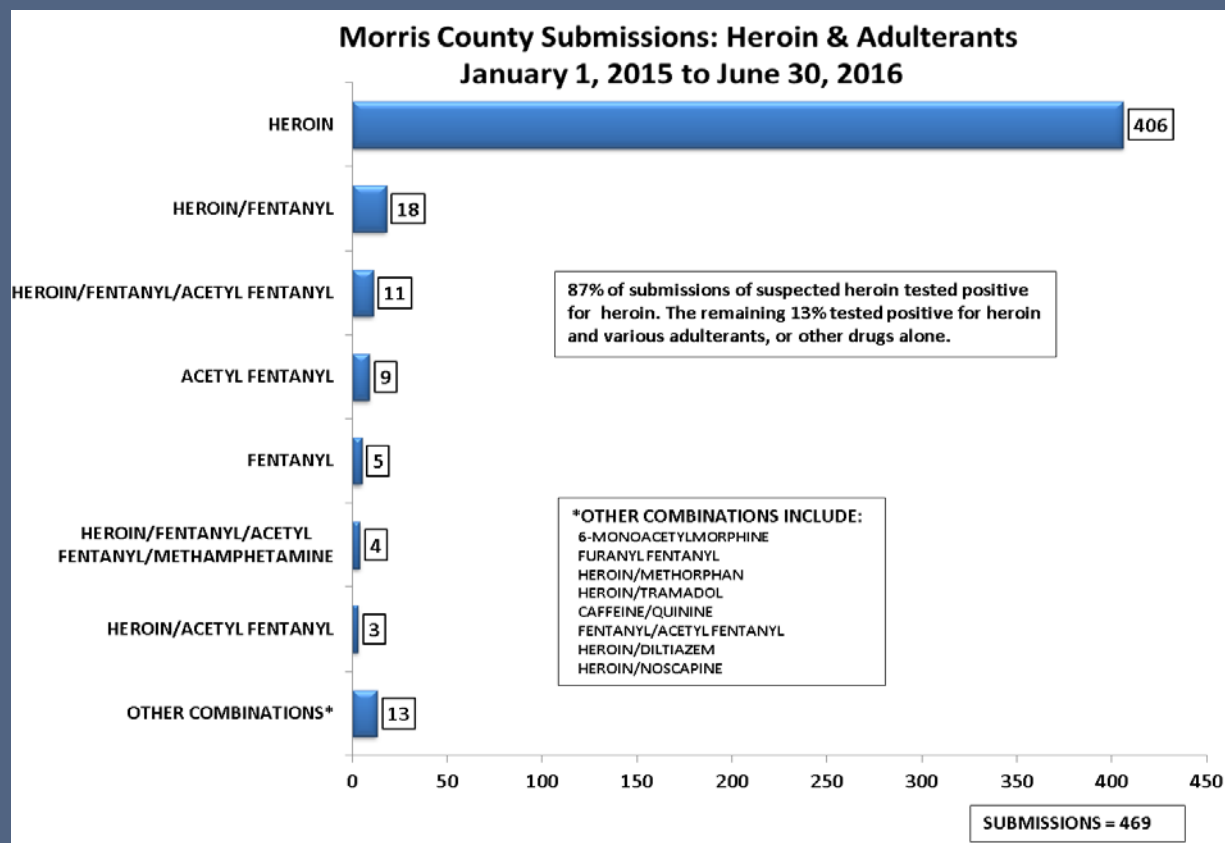


# Heroin Cocktails and the Fentanyl Trend

Fentanyl class compounds, in combinations with other illicit drugs, continue to be the most common adulterants in submissions to forensic labs in New Jersey.



During the 4<sup>th</sup> qtr New Jersey Forensic labs saw more cases and more glassines containing fentanyl class compounds than in any other previous quarter.





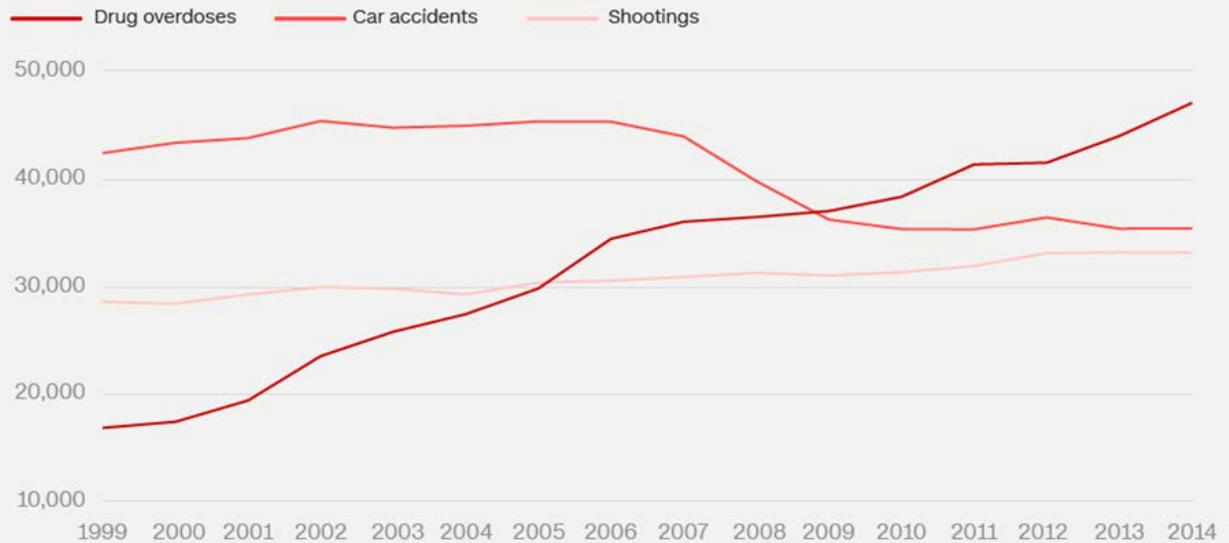
# KILLER

Tragically, the most recent data shows that more than 16,000 lives are lost each year due to opioid-related overdoses. In fact, drug overdose deaths, driven largely by prescription drug overdose deaths, are now the leading cause of injury death in the United States – surpassing motor vehicle crashes.



## Drugs now kill more people than cars, guns

Number of deaths from drug poisonings vs. other causes, 1999–2014



Tragically, since 2014, in Morris County at least 143 people have lost their lives to Heroin or Prescription Opiates

## Morris County Fatalities Comparison

<u>FATAL MOTOR VEHICLE ACCIDENTS BY YEAR</u>	<u>MURDERS BY YEAR</u>	<u>FATAL OPIATE OVERDOSES BY YEAR</u>
2014 – 14	2014 – 5	2014 – <b>36</b>
2015 – 23	2015 – 2	2015 – <b>43</b>
2016 – 21*	2016 – 0	2016 – <b>64</b>

2014

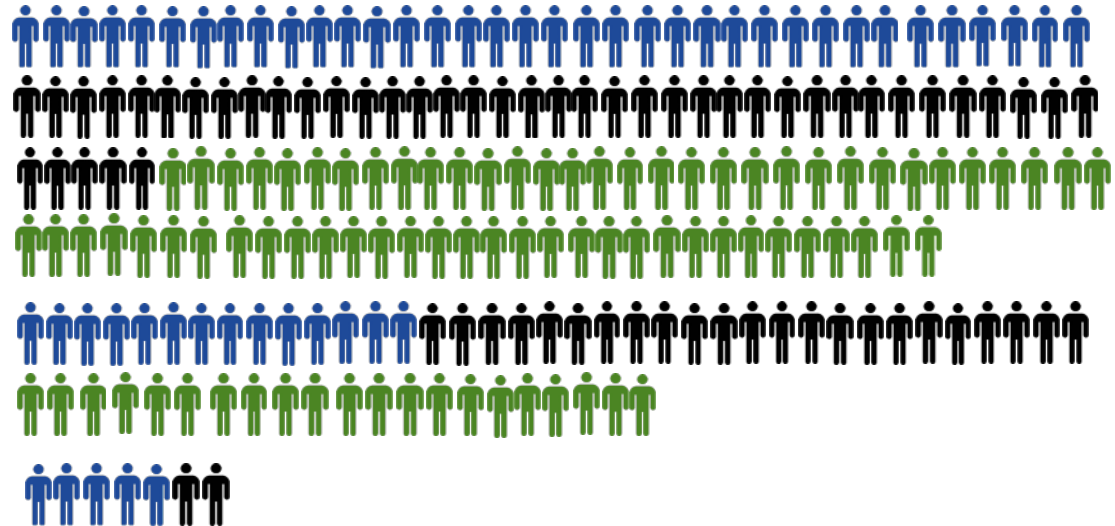
2015

2016

Fatal Opiate overdoses

FATAL MOTOR VEHICLE ACCIDENTS

MURDERS



68%

of these preventable fatalities in the last 3 years were **Fatal Opiate Overdoses**

# LEO Narcan Deployments – 2015 and 2016

## 2015

- Total Deployments = 50
  - Fatal = 6
  - Reversals/Successful = 44
- Male = 35 (79.5%)
- Female = 6 (20.5%)
- Age Range = 18-67
- Average Age = 33
- Morris County Residents = 26 (82.0%)

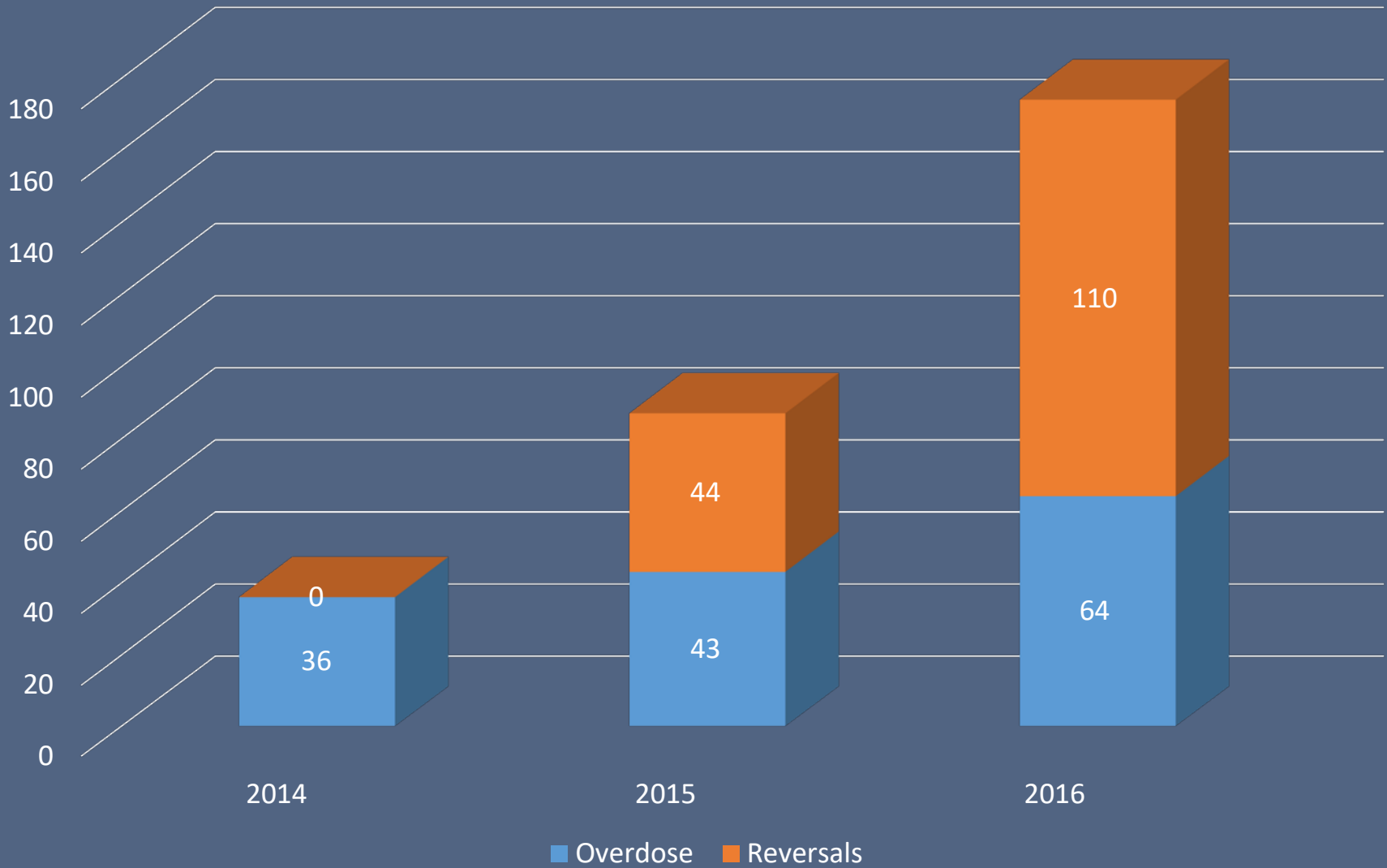
## 2016

- Total Deployments = 122
  - Fatal = 12
  - Reversals/Successful = 110
- Male = 93 (76.3%)
- Female = 29 (23.7%)
- Age Range = 16-59
- Average Age = 31
- Morris County Residents = 99 (81.1%)

*STATEWIDE: Naloxone administrations increased 17% on Friday and Saturday*



# LEO Narcan Deployments



# What is Law Enforcement doing?

- Overdose Prevention Act and Drug Court
  - *Criminal Justice to treat addicted not just incarcerate*
- Prescription Monitoring Program
  - ✓ Intelligence for Law Enforcement and Doctors
- NJSP ROIC Drug Monitoring Initiative
  - Real-Time Intelligence



# What are we doing Continued...

- State-wide and Morris County Narcan Program
- Pawned Item database and other Burglary Theft initiatives (RAPID)
- **MCPO Task Force focus on organized criminal networks, upper level dealers and repeat offender dealers**



# What are we doing Continued...

- Drop Box Programs







# What are we doing Continued...



- Highway Interdiction
- Strict Liability Death Prosecution
- Responsible Use of Asset Forfeiture Laws
- Education Programs and Partnership with prevention and treatment groups



*Morris County, NJ*

# OFFICE OF THE PROSECUTOR

*Fredric M. Knapp*

Morris County Prosecutor

## CONTACT INFORMATION:

*Bradford C. Seabury*

*Chief Assistant Prosecutor*

*Morris County Prosecutor's  
Office*



*973-631-5192*

*bseabury@co.morris.nj.us*



**MORRIS COUNTY  
PROUD TO BE  
STIGMA-FREE**

